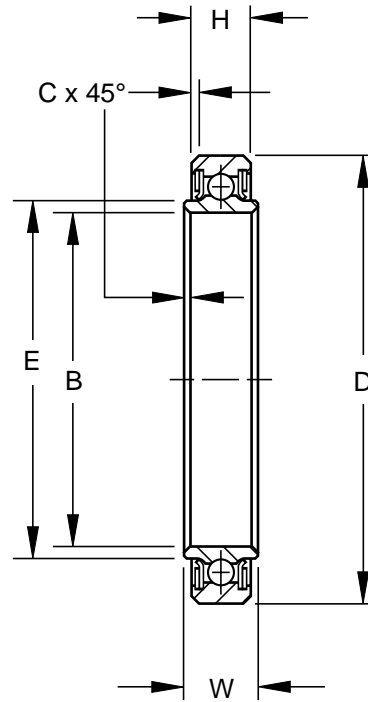


MS27642-S

- Single row, ball, deep groove, light duty
- PTFE seals and CRES sealcaps
- Exposed surfaces except bore, caps, and seals are cadmium plated
- Prelubricated for life
- Also offered with CRES 440C material and/or zinc nickel plating per OEM specifications



AIRFRAME CONTROL BALL BEARINGS

SPECIFICATIONS AND ORDERING INFORMATION

TO ORDER, SPECIFY BEARING NUMBER AND FACTORY SPECIFICATION. SEE TABLE 1 ON PG 8. (Example MKP16B)

Bearing Number 52100†	MS 27642 Dash No.	Bore B		Outside Diameter D		Widths				E		C		Wt.		Radial Limit Load Rating	Thrust Limit Load Rating		
		+0.0000, -0.0005 +0.000, -0.013		+0.0000, -0.0010 +0.000, -0.025		+0.0000, -0.0025 +0.000, -0.064		+0.000, -0.005 +0.00, -0.13		Approx.		+0.015, -0.000 +0.38, -0.00		Approx.					
		in.	mm	in.	mm	in.	mm	in.	mm	in.	mm	in.	mm	lbs.	kg			lbf.	N
MKP16B	-16S	1.0000	25.400	1.7500	44.450	0.4370	11.100	0.375	9.53	1.150	29.21	0.024	0.61	0.14	0.064	8090	36000	3600	16000
MKP21B	-21S	1.3125	33.338	2.0625	52.388	0.4370	11.100	0.375	9.53	1.465	37.21	0.024	0.61	0.16	0.073	9840	43800	4400	19600
MKP23B	-23S	1.4375	36.512	2.1875	55.563	0.4370	11.100	0.375	9.53	1.585	40.26	0.024	0.61	0.17	0.077	10500	46700	4700	20900
MKP25B	-25S	1.5625	39.688	2.3125	58.738	0.4370	11.100	0.375	9.53	1.700	43.18	0.024	0.61	0.19	0.086	11300	50300	5000	22300
MKP29B	-29S	1.8125	46.038	2.5625	65.088	0.4370	11.100	0.375	9.53	1.940	49.28	0.024	0.61	0.21	0.095	12700	56500	5600	25000
MKP33B	-33S	2.0625	52.388	2.8125	71.438	0.4370	11.100	0.375	9.53	2.234	56.74	0.024	0.61	0.23	0.104	14400	64000	6400	28600
MKP37B	-37S	2.3125	58.738	3.0625	77.788	0.4370	11.100	0.375	9.53	2.475	62.87	0.024	0.61	0.26	0.118	15800	70300	7000	31100
MKP47B	-47S	2.9375	74.612	3.8750	98.425	0.5310	13.490	0.469	11.91	3.105	78.87	0.039	0.99	0.49	0.222	24700	110000	10900	48500
MKP49B	-49S	3.0625	77.788	4.0000	101.600	0.5310	13.490	0.469	11.91	3.230	82.04	0.039	0.99	0.53	0.240	27500	122500	12100	54000
MKP52B	-52S	3.2500	85.550	4.1875	106.363	0.5310	13.490	0.469	11.91	3.460	87.88	0.039	0.99	0.55	0.249	28700	12770	12600	56000
MKP56B	-56S	3.5000	88.900	4.4375	112.713	0.5310	13.490	0.469	11.91	3.734	94.84	0.039	0.99	0.59	0.268	31200	140000	13700	61000
MKP60B	-60S	3.7500	95.250	4.6875	119.063	0.5310	13.490	0.469	11.91	3.972	100.89	0.039	0.99	0.61	0.277	33100	147300	14600	65000
MKP64B	-64S	4.0000	101.600	4.9375	125.413	0.5310	13.490	0.469	11.91	4.217	107.11	0.039	0.99	0.64	0.290	35500	157900	15400	68500
MKP68B	-68S	4.2500	107.950	5.3125	134.938	0.5930	15.060	0.531	13.49	4.478	113.74	0.039	0.99	0.73	0.331	41900	186400	18400	81800
MKP72B	-72S	4.5000	114.300	5.5625	142.875	0.5930	15.060	0.531	13.49	4.736	120.29	0.039	0.99	0.76	0.345	44300	197000	19500	86700

† For CRES 440C material prefix "A" in part number; e.g., AMKP21B